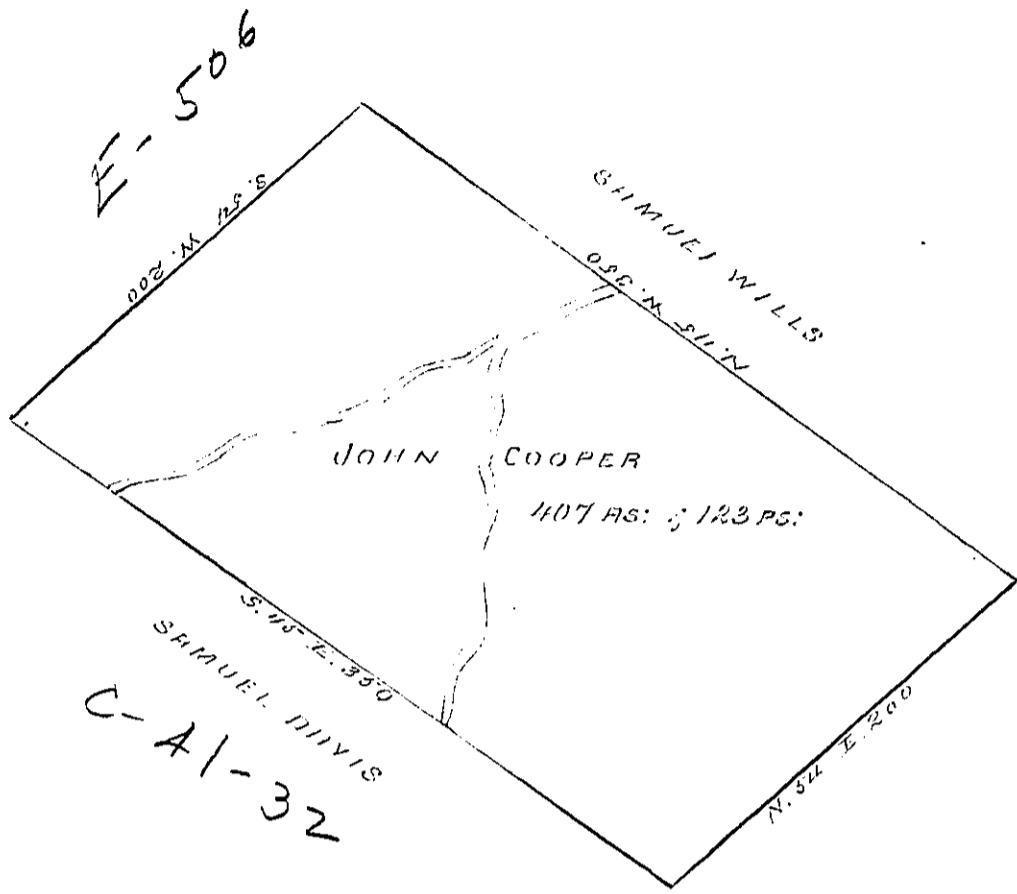


H-46-210
To- Chas. Cox



A Tract of Land, situated on Beaver Creek, adjoining land of Samuel Wills & Land of Samuel & Davis in the County of Bedford, Containing Four hundred and seven acres and one hundred and twenty-three perches and the usual allowance of Six Feet for Roads. Surveyed the 8th day of November 1784, in pursuance of a Warrant granted to John Cooper, dated the 10th July 1784.

To John Leckers Esq. S. S.

George Woods S. S.

IN TESTIMONY that the above is a copy of the original remaining on file in the Department of Internal Affairs of Pennsylvania, made conformably to an Act of Assembly approved the 16th day of February, 1833, I have hereunto set my Hand and caused the Seal of said Department to be affixed at Harrisburg, this

Twenty-eighth day of October 1887.

Thos. J. Stewart
Secretary of Internal Affairs